

## MULTIPLEX INFORMATION SHEET MT4

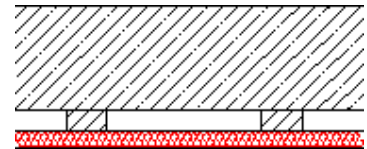
April 2003

### Design and Installation Notes (Internal Lining)

#### 1) Fixing

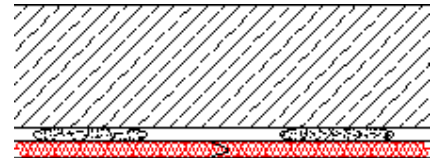
##### MULTIPLEX fixed to masonry wall using timber battens

- Create substructure using min. 25x50mm vertical timber battens @ max. 300mm centers, appropriately fixed back to structure using suitable fixings.
- Fix boards to substructure using 4.5x45mm wood screws @ max.300mm centres.
- Glue board joints (t&g) with ProClima COLL adhesive.



##### MULTIPLEX fixed to masonry wall using plaster dabs

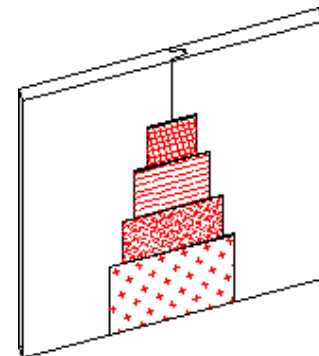
- Fix boards to masonry walls with plaster dabs (e.g. Knauf, British Gypsum, or Lafarge). Apply in accordance with manufacturers instructions (read 'MULTIPLEX' in place of 'gypsum based lining board').
- Apply plaster dabs every 200 - 300mm
- Glue board joints (t&g) with ProClima COLL adhesive



#### 2) Finishing

##### MULTIPLEX finished with plaster / wallpaper

- Fill joints and screwheads with a ready mix filler
- Prime board joints with ProClima AC Primer
- Tape joints with ProClima TOP Tape
- Prime entire surface with a *vapour permeable* wood primer, wallpaper glue, or natural emulsion paint
- Apply two-coat plaster finish / wallpaper



##### MULTIPLEX finished with tiles

- Not suitable for rooms with high humidity
- Cover joints with self-adhesive fine fabric scrim tape
- Apply flexible tiling adhesive over entire wall area
- Fix tiles with flexible tiling adhesive