

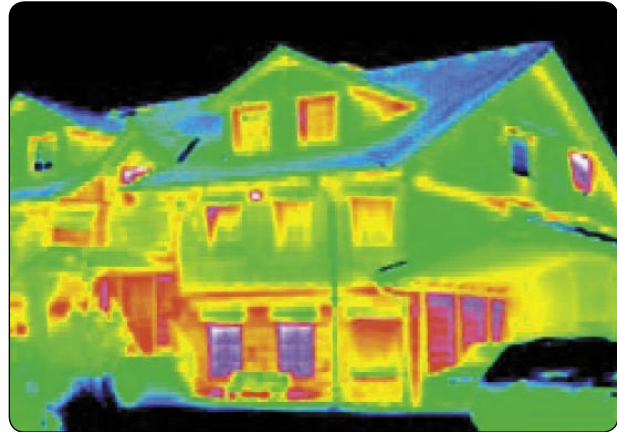
## pro clima® DB+ / DA / RB building papers

### High performance airtight building papers and airtight vapour control layers for internal use

#### GENERAL

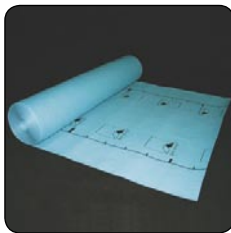
Airtightness is essential in order to prevent unnecessary heat loss through the building fabric. Any shortcomings in airtightness will increase heating costs, and may cause interstitial condensation.

Water vapour permeability is essential in order to reduce the risk of interstitial condensation within the building fabric. Vapour permeability also prevents the build-up of toxic emissions within a building, particularly important in buildings with good airtightness.



#### pro clima DB+

**Air leakage barrier and vapour control layer for internal use (universal application)**



#### ADVANTAGES

- Active membrane (variable water vapour diffusion)
- Reinforced for extra strength
- Minimum 50% recycled content

#### PRODUCT DATA

Composition (2-ply)      Cellulose (50% recycled)  
Glassfibre reinforcement

Surface weight            185 g/m<sup>2</sup>  
Thickness                 0.23 mm  
Vapour resistance factor  $\mu$     10,000  
 $S_d$ -Value                 **2.3 m** (variable)

Fire rating                 Class B2

Breaking strength (MD/XD)    130 N / 89 N  
Breaking elongation (MD/XD) 2.3 % / 3.2 %

Colour                        Blue  
Roll width                  1.05 / 1.05 / 1.35 m  
Roll length                 50 / 100 / 100 m  
Roll weight                 10 / 20 / 25 kg  
Coverage per roll            47.25 / 94.5 / 121.5 m<sup>2</sup>

#### pro clima DB+ SPECIAL

**Air leakage barrier and vapour control layer for internal use (universal application)**



#### ADVANTAGES

- Active membrane (variable water vapour diffusion)
- Reinforced for extra strength
- Minimum 50% recycled content

#### PRODUCT DATA

Composition (2-ply)      Cellulose (50% recycled)  
Glassfibre reinforcement

Surface weight            185 g/m<sup>2</sup>  
Thickness                 0.25 mm  
Vapour resistance factor  $\mu$     40,000  
 $S_d$ -Value                 **10 m** (variable)

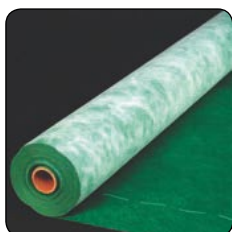
Fire rating                 Class B2

Breaking strength (MD/XD)    130 N / 89 N  
Breaking elongation (MD/XD) 2.3 % / 3.2 %

Colour                        Blue  
Roll width                  1.05 m  
Roll length                 100 m  
Roll weight                 25 kg  
Coverage per roll            94.5 m<sup>2</sup>

## pro clima DA

**Air leakage barrier and vapour control layer for use externally behind insulation layer**



### ADVANTAGES

- Vapour open,  $S_d = 2.3$  m
- For use on all substrates
- Hydrophobic and extremely waterproof

### PRODUCT DATA

Composition (2-ply)      PP Microfibre fleece

Surface weight	130 g/m <sup>2</sup>
Thickness	0.45 mm
Vapour resistance factor $\mu$	5,000
$S_d$ -Value	<b>2.3 m</b>
Water resistance	water column > 2.5 m

Fire rating      Class B2

Breaking strength (MD/XD)	280 N / 190 N
Breaking elongation (MD/XD)	35% / 45%

Colour	Green
Roll width	1.60 m
Roll length	100 m
Roll weight	25 kg
Coverage per roll	94.5 m <sup>2</sup>

### SUPPLY

#### Availability

pro clima building membranes can be ordered directly in the UK exclusively from Construction Resources.

#### Packaging

Rolls are supplied individually or on pallets.

## pro clima RB

**Vapour open air and aggregate leakage barrier for internal use (universal application)**



### ADVANTAGES

- Extremely diffusion open,  $S_d = 0.03$  m
- Suitable as underlay for loose fill materials
- Suitable as wind barrier in loft spaces

### PRODUCT DATA

Composition (3-ply)      PP Microfibre fleece

Surface weight	45 g/m <sup>2</sup>
Thickness	0.30 mm
Vapour resistance factor $\mu$	100
$S_d$ -Value	<b>0.03 m</b>

Fire rating      Class B2

Breaking strength (MD/XD)	16 N / 18 N
Breaking elongation (MD/XD)	86% / 87%

Colour	Black
Roll width	0.75 / 1.5 m
Roll length	100 / 50 m
Roll weight	4.5 kg
Coverage per roll	75 m <sup>2</sup>

### SERVICES

#### Sales

For cost quotations please contact the Sales Department at the address below.

#### Technical

For further technical information on this product please contact a product specialist at the address below.